



Kidmin App



Tools to do ministry better.



Kidmin App

The best check-in system to do ministry.

Here's a few reasons why churches (including volunteers and parents!) are using Kidmin App to do ministry even better:

Mobile app for parents lets them see their child's status and can even act as a pickup tag for the child. No more lost tags!

An app for volunteers. Let's pretend "little Jimmy" gets sick during the service. Your teacher can page Jimmy's parent with just a tap without ever leaving the room!

We want to help you **stretch your ministry dollars!** You won't be charged extra per check-in station (unlike some of our competitors).

We're incredibly **easy to use** (translation = less training for everyone).

To check kids in, just hit the green button, and start typing the parent's name. Really simple stuff!

We have an optional express check-in feature that lets your parents check in their kids before they even step foot in the building. No more lines and **more time to focus on visitors!**

Why you need a checkin system.



The Kidmin App check-in system provides the safety and security every church needs, no matter its size. Our check-in system issues an adhesive tag for the child to wear and a matching security tag for the parent or guardian. In order to pick up their child, the parent must present their tag to the ministry leader or volunteer. We also have an electronic pickup tag option.

This ensures the right person picks up the right child every time. It helps prevent someone from coming into your children's ministry and abducting a child, or a non-custodial parent from taking the child. The Kidmin App check-in system helps protect the children in your church, as well as the parents and volunteers.

Once your church has a system in place for keeping kids safe, you are freed up to focus on teaching them about Jesus.



Kidmin App

What you can do with Kidmin App.

Keep kids safe.

Empower your team.

Track the important things.

Build trust with parents.

"It gives our first-time guests confidence that things are well managed and safe."

"It helps keep track of all students and where they are at. I love the birthday reports!"

"Express checkin is a huge help for us. Most of our parents use the app to check in before they arrive. This allows for shorter check-in lines and is especially helpful when welcoming visitors."

"We love the ability to contact newcomers easily!"

"The attendance reports are great! Scanning the tag to text a parent is wonderful. I really love everything about the Kidmin App!"

"We like how easy it is to use!"

"Love the mobile checkin and the rosters on the mobile app."





Kidmin App: how does it work?

System Requirements



Mac/PC Computer or
Windows Tablet



Label Printer



Internet Connection

3 Check-in Options to best fit your ministry needs

Desk checkin



Volunteer manned
Use to register new
families & visitors

Kiosk Mode



Self checkin
Option for regulars
without mobile device

Express checkin



Self checkin
Parents use mobile
device to check in

Reports



Available with
our Popular
Plan

We have reports to help you keep
track of:

- Birthdays to make sure every child feels thought of
- Children that haven't come in a while and are slipping away
- New registrations for quick and easy follow-up

Never miss a child again!



Tags & Security

Child Tag



Child's First Name
Last Name
*Allergies: List
Class Name
Service Date

0001

- Includes list of allergies for quick reference.
- Numeric code matches parent tag and changes each checkin for additional security.

Parent Security Tag*



Parent's First Name
Last Name
Parent Pick-up Tag
Save for child pickup
Service Date

0001

Electronic parent pickup tag can
be enabled in mobile app (no
more lost tags!)

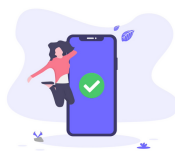
Register new families QUICKLY with ease & intention



At minimum you need:

- ☒ Child's name & birthday
- ☒ Parent's name & phone number

Mobile app for volunteers & parents



Free mobile app
available on
Google Play or
iTunes

GUARDIANS/PARENTS:

- Use express checkin (if enabled by your church).
- For child pickup, show volunteer electronic pickup tag
- Add children & update profile information.

Note: If parent is also a volunteer,
can access volunteer functions.

VOLUNTEERS & ADMIN:

- View a live roster of each class in real time.
- Select a child and access information (allergies, etc.), one-tap parent paging, & child checkout.
- Scan code on child or parent tags





Note: Have access to all parent
functions listed above.



Kidmin App

Kidmin App vs. other check-in systems.

Compare us to the competition.

	 Kidmin App	OTHER CHECK-IN SYSTEMS
 cost	<p>Two different plans to fit your budget</p> <p>Fixed cost: unlimited check-in stations</p>	<p>Expensive plan options or cheap limited plans</p> <p>Often charge extra per check-in station</p>
 features	<p>One-touch paging FREE app for parents & volunteers</p> <p>Simple reporting & attendance tracking</p>	<p>Limited contact process</p> <p>Often desktop only</p> <p>Complicated reporting</p>
 express check-in	<p>Included in ALL plans</p> <p>Parents can check in BEFORE they ever enter the building, cutting down lines & leaving your volunteers free to focus on your visitors</p>	<p>Not available or only available with additional charge</p>

A detailed review.

Express checkin allows a focus on visitors.

"Because most of our regulars can use their phones to use the express checkin, there's not a big crowd at the desk checkin and the only ones are usually new visitors. This allows our volunteer to make sure intake is pleasurable and we can really focus on the new families."

Real-time class updates.

"I'm able to see real time how classes are doing from my phone. I can make the decisions to open another class, close one, get another volunteer, whatever's needed to make sure our classrooms are at safe ratios."

Working with REAL people.

"My feedback and support requests are responded to quickly. After using the system for a month, I gave a list of five changes I thought should be made; three were done within six weeks. And the live support person was always quick to respond and help whenever I had questions."

Lean system that doesn't overtax bandwidth.

"As a rural church with a radio internet connection, we are not blazing fast. What attracted me to Kidmin App was that most of it could be done remotely on cell phones by the parents at home or in the parking lot. There's not a whole lot having to happen on site, and our internet could handle it."

Reporting features (available with the *Popular Plan*).

"I like the reporting feature, but I love the birthday report especially. We just started a card ministry with the help of a lovely retired woman who has the time. She gives me a stack of cards to sign every week and they go out. We are able to follow up and make kids feel special."



The price was right.

"The price was right, especially since Kidmin App used the same printer as the system we had used previously. And since Kidmin App uses a smaller label, there's been huge cost savings in purchasing labels."

Jason A., Children's & Worship Pastor

Which plan?

BASIC

\$ **35** /MO

Up to 50* Checkins

Mobile App for Volunteers

Kiosk Check-in

Desk Check-in

Unlimited Check-in Stations

 ~~Attendance Reports~~

 ~~Priority Support~~

Recommended for smaller churches with a limited budget and/or a church that needs to show system viability prior to upgrading to Popular.

POPULAR

\$ **60** /MO

Up to 150* Checkins

Mobile App for Volunteers

Kiosk Check-in

Desk Check-in

Unlimited Check-in Stations

 Attendance Reports

 Priority Support

Recommended for all churches, small to medium, ready to take full advantage of the Kidmin App system. Keep up with your kids and ensure none of them fall through the cracks.

Attendance reports help you quickly and easily track attendance, birthdays, new kids, kids slipping away.

*Number of checkins is counted per child per day. So even if you have multiple services on a single day, each child only counts as one checkin when determining your plan options.

Need more than 150 checkins? We have custom quotes available.



Kidmin App

Interested in checking out the demo?

Go to www.kidminapp.com/demo to request your demo today.

Here's what you'll see:

1. Check-in Options (Desk Check-in, Kiosk Mode)
2. Mobile App Features for Parents (Express Checkin, Electronic pick-up tag)
3. Mobile App Features for Volunteers (Live Roster, Tag Scanners)
4. Detailed Reports & Attendance Tracking
5. What you'll need to get started with Kidmin App

We know time is one of the many things ministry leaders are always short on so the demo video will only take you **five minutes** to watch, but it covers all the important things.

A special offer for you.

If you're ready to sign up, we'd love to give you 50% off your first month. Just enter the following promo code during check out:

DEMO20

Go to www.kidminapp.com/pricing to sign up for the plan that best fits your ministry.

And if you take advantage of the yearly payment option, you'll get the equivalent of two months free!

If for any reason you're not completely happy with how Kidmin App serves your ministry, there's a 30-day money back guarantee.



System recommendations & requirements.

System Requirements

PC computer version: Windows 7 or newer

Mac computer version: Mac version 10.14 or newer*

Tablets running Windows 10

***Note: If your church will be using Mac computers, please contact our support team prior to signup as a different printer is required for Mac users.**

Printer Requirements (cannot mix brands)

Windows/PC users: We recommend Dymo 450 Turbo or Dymo 450.

Mac users: Our system uses the QL-800 Brother printer.

*Note: The printing software is not compatible with Chrome books due to a limitation with their software.

Basic Setup

Kidmin App is designed to fit your church by being flexible. At a minimum we require a computer or Windows 10 tablet, a label printer and labels (size 1 1/8 x 3 1/2), and a reliable internet connection.

This will allow you to get the basic tag printing functionality.

Adding Additional Check-In Stations

To add an additional check-in station you just need to have another computer/Windows 10 tablet and label printer. You can add as many check-in stations as you want. We let you add an unlimited amount of stations for free.

Requirements for a Kiosk Station:

If you want to set up a self-serve kiosk station, you can use a Windows/Mac computer or a tablet or touch-screen based on Windows 7 or newer. Each Kiosk station will need its own printer. As an administrator, you can switch back and forth from Kiosk mode to desk check-in at any point.

FAQs

What if I need more than 150 checkins?

Not a problem! Contact us at help@kidminapp.com for your custom quote.

Is your system compatible with iPads?

Unfortunately at this time our system can't print from iPads due to a limitation with Dymo's software, BUT we are in the process of actively working on a solution for this. Be sure to contact support and ask where we are in the process.

How long do the tags take to print?

Seconds! (Our system is lean and doesn't take a lot of bandwidth to run.)

Is there a way to send text messages to parents and/or volunteers?

You and your assigned volunteers can page parents from the desk check-in or the mobile app.

How easy is it to train someone?

Incredibly easy (and our users say the same). Our system is intuitive and the check-in process simple. We also have help articles available to share with your parents and volunteers to make sure they have access to everything they need.

Is there a scanner you need to use for check-outs?

No external scanner is needed as we have a scanner feature already available within our mobile app that any assigned volunteer has access to.

Are you able to use Kidmin App to do special one-time events?

The same functionality for regular services is available for one-time events.

Do volunteers have to check-in?

There is an optional volunteer check-in feature available from the desk check-in.

Is there a contract? What happens if I cancel?

You can pay on a monthly or annual basis. If you have an annual subscription and choose to cancel before the end, you'll be refunded for any unused months.

Contact us.

Get a custom quote.

Ask a question.

Get help signing up.

Just say hello!



Whatever you need, reach out anytime. We're here to help!

Email us at help@kidminapp.com.

Or go to www.kidminapp.com and hop on our live chat.



Kidmin App

kidminapp.com